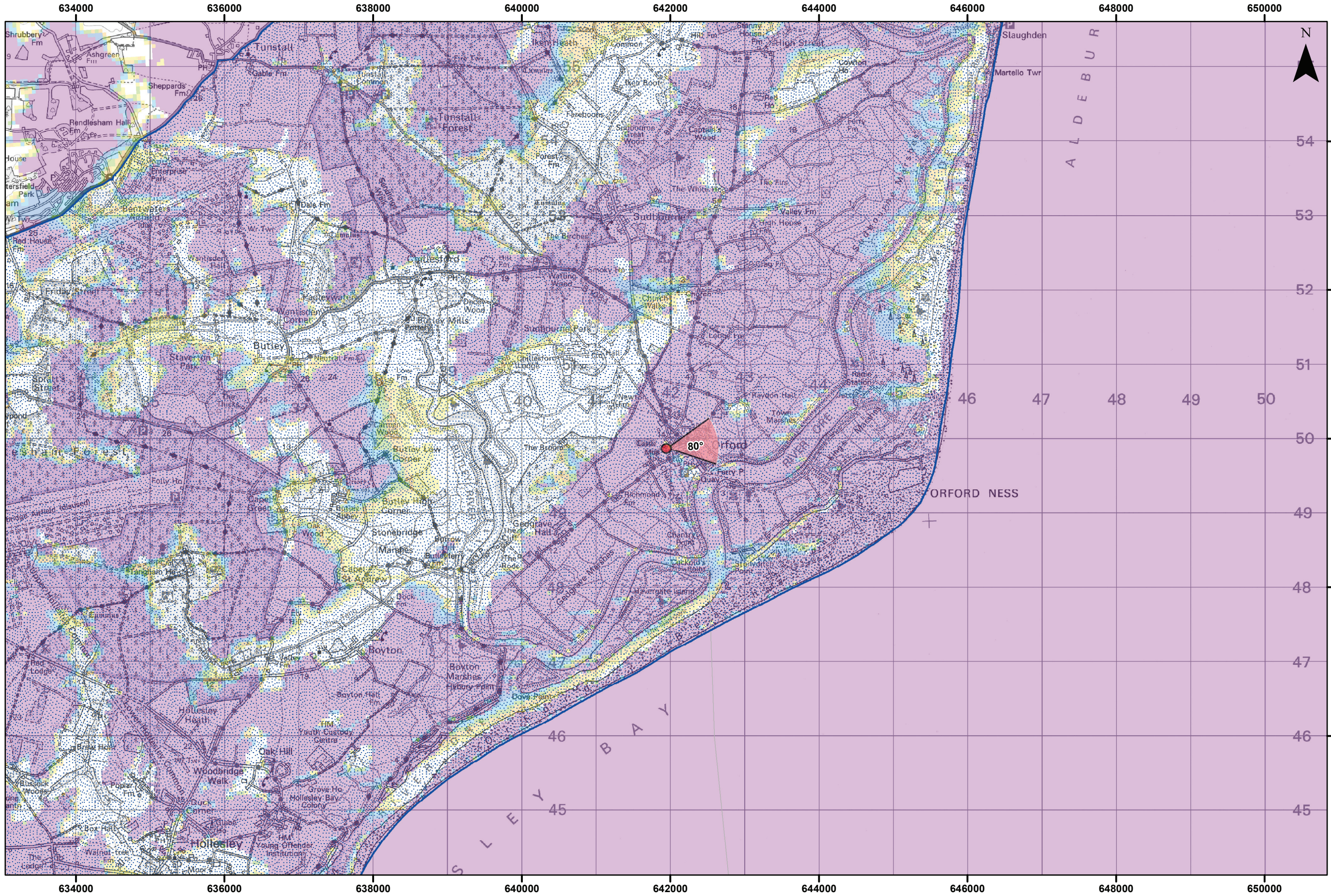


Viewpoint Location Plan - 90 Degree View
Scale: 1:350,000



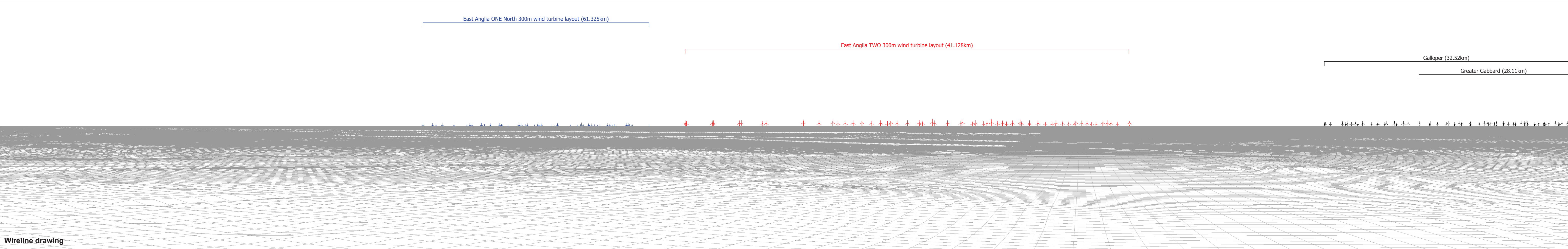
Viewpoint Location Plan - 53.5 Degree View
Scale: 1:50,000

3	30/08/2019	LA	Second issue			<div>Source: © Crown copyright and database rights 2018. Ordnance Survey (100031873). The Crown Estate © Crown Copyright (2018). © Natural England copyright. Contains Ordnance Survey data © Crown copyright and database right 2019. This map has been produced to the latest known information at the time of issue, and has been produced for your information only. Please consult with the SFR Creative GIS team to ensure the content is still current before using the information contained on this map. In the limited extent permitted by law, we accept no responsibility or liability (whether in contract, tort (including negligence) or otherwise) in respect of any errors or omissions in the information contained in the map and shall not be liable for any loss, damage or expense caused by such errors or omissions. ZTV Created using ESRI ArcGIS 10.5 software and the following data and parameters: Data to height: 30m DTM Data: OS Terrain 50 DTM Resolution: 50m Observer height: 2m No surface features, such as buildings or trees, were included in the analysis. Earth curvature and light refraction has been included in calculations.</div>										
2	13/08/2019	LA	Second issue	Prepared:	TH											
1	14/05/2019	TH	First issue	Checked:	SM											
Rev	Date	By	Comment	Approved:	LT											
						<div><div>East Anglia TWO</div><div>Viewpoint: 14</div><div>Orford Castle</div></div> <table><tr><td>Drg No</td><td colspan="2">EA2-DWF-ENV-REP-IBR-000920</td></tr><tr><td>Rev</td><td>3</td><td rowspan="3">Datum: WGS 1984 Projection: Zone 31N</td></tr><tr><td>Date</td><td>30/08/19</td></tr><tr><td>Figure</td><td>28.38a</td></tr></table>	Drg No	EA2-DWF-ENV-REP-IBR-000920		Rev	3	Datum: WGS 1984 Projection: Zone 31N	Date	30/08/19	Figure	28.38a
Drg No	EA2-DWF-ENV-REP-IBR-000920															
Rev	3	Datum: WGS 1984 Projection: Zone 31N														
Date	30/08/19															
Figure	28.38a															



Existing photograph

This image provides landscape and visual context only



Wireline drawing

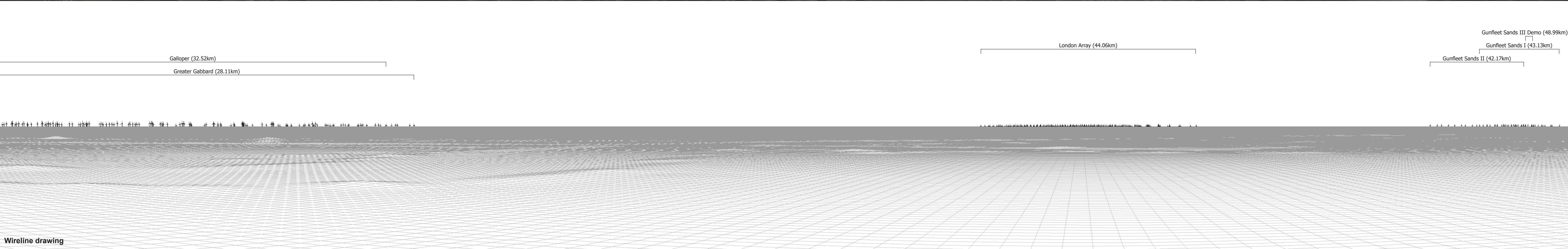
OS reference:	641944 E 249868 N	Horizontal field of view:	90° (cylindrical projection)	Camera:	Canon EOS 6D
Eye level:	40.66 m AOD	Principal distance	522 mm	Lens:	50mm (Canon EF 50mm f/1.4)
Direction of view:	73°			Camera height:	1.5 m AGL
Nearest turbine:	41.128 km			Date and time:	09/09/17, 12:44

Figure: 28.38b
Viewpoint 14: Orford Castle



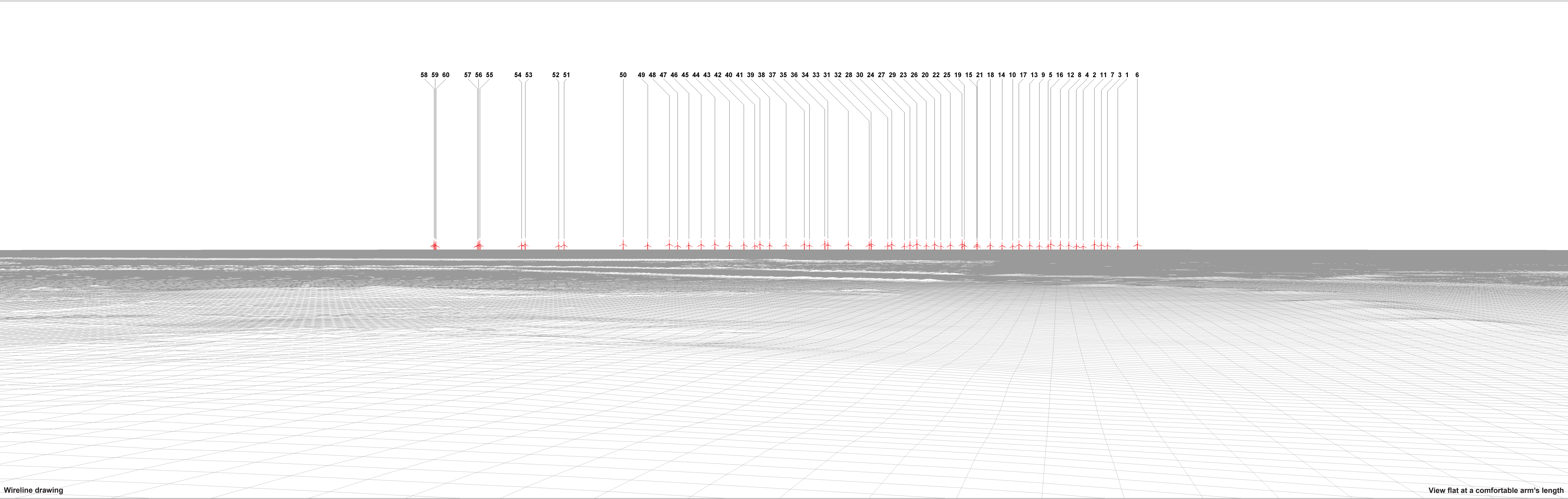
Exisiting photograph

This image provides landscape and visual context only



OS reference:	641944 E 249868 N	Horizontal field of view:	90° (cylindrical projection)	Camera:	Canon EOS 6D
Eye level:	40.66 m AOD	Principal distance	522 mm	Lens:	50mm (Canon EF 50mm f/1.4)
Direction of view:	163°			Camera height:	1.5 m AGL
Nearest turbine:	41.128 km			Date and time:	09/09/17, 12:44

Figure: 28.38c
Viewpoint 14: Orford Castle



Wireline drawing

View flat at a comfortable arm's length



Photomontage

View flat at a comfortable arm's length

OS reference:	641944 E 249868 N	Horizontal field of view:	53.5° (planar projection)	Camera:	Canon EOS 6D
Eye level:	40.66 m AOD	Principal distance	812.5 mm	Lens:	50mm (Canon EF 50mm f/1.4)
Direction of view:	80°	Paper size:	841 x 297 mm	Camera height:	1.5 m AGL
Nearest turbine:	41.128 km	Correct printed image size:	820 x 260 mm	Date and time:	09/09/17, 12:44

Figure: 28.38e
Viewpoint 14: Orford Castle